

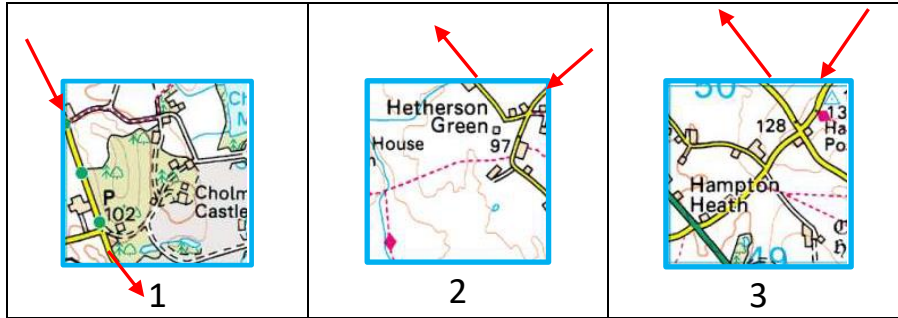
Tour of Cheshire 2023 – Saturday 4th March

Regularity A Navigation – Coloured Roads Only.

From RSA at **117 / 510¹/₂ 532³/₄** **S** take the shortest route consistent with the following instructions:

Pass through the following Grid Squares in the order shown.

The red arrows indicate the Initial entry into and exit from the squares.



Then pass through the following Junctions in order. **Consider ALL roads.**

	LWR NAM !! 	NAM ! @ MR 492¹/₄ 504³/₄ Leave Public Rd.	Follow Private track	Rejoin Public Road	SGW 'A' Road

Then via coloured road junctions (ignore 'gated' whites)

ywy yyy yyy **yyw wyw** yyy yGGy yyy yyy yGGY

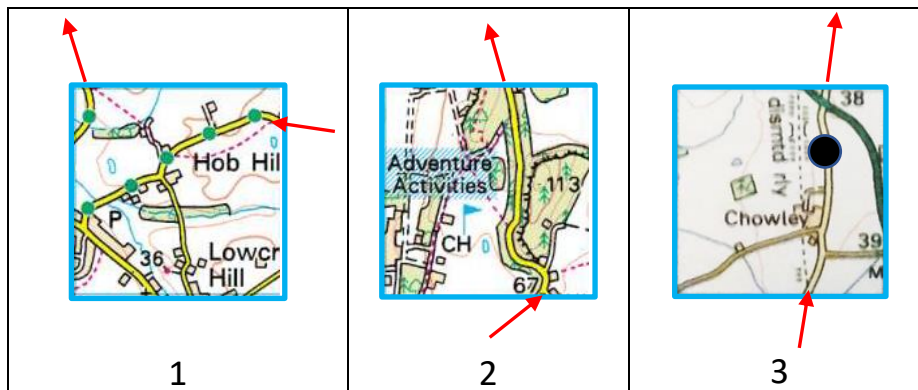
 ^ ^

LOOK !!

Revert to **CRO** passing through the following Grid Squares in order.

The red arrows indicate the Initial entry into and 'Final' exit(😊) from the squares.

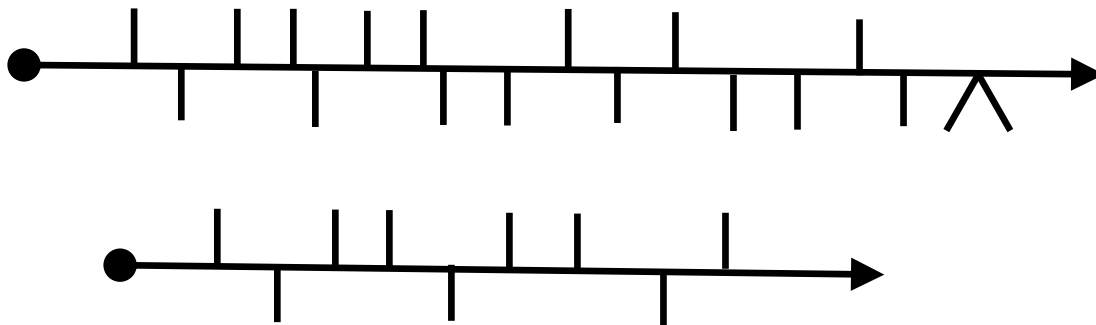
Watch out for Black Spots!



Continued on page 2....

Tour of Cheshire 2023 – Saturday 4th March
Regularity A Navigation continued – Coloured Roads Only.

Now follow these two herringbones:



To RFA at **117 / SE 584 640**

Speed Changes:

Start at 30 mph.

At IRTC A1 change to 25 mph.

At a cumulative 4 miles change to 29 mph for 1 mile then reduce by 3 mph.

At a cumulative 7.8 miles change to 20 mph.

The 3rd time you cross the A41 change to 27 mph.

At IRTC A6 change to 23 mph for 1 mile and then increase by 6 mph.

At a cumulative 22.25 miles change to 23 mph.

At IRTC A7 change to 26 mph for 1.5 miles then reduce by 6 mph.

No controls between 24.25 and 24.75 miles - Quiet Zone.

At a cumulative 26 miles change to 28 mph.